

# PRODUCT RECALL / HAZARD NOTICE

## REQUEST FOR INSPECTION



21st October 2019

We have recently been made aware of an incorrectly assembled DMM Nexus swivel body.

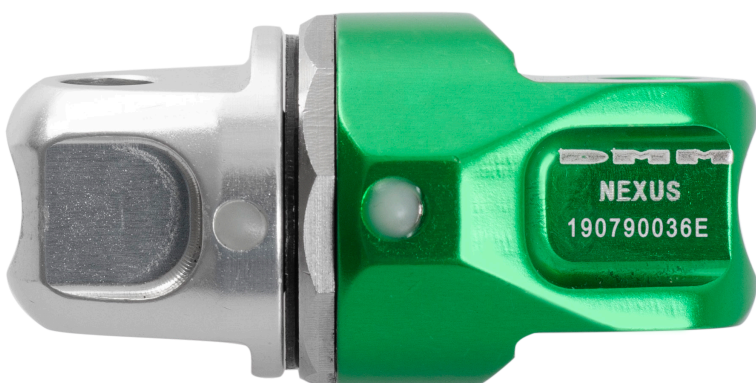
The error in assembly meant that the two sides of the swivel could be separated. This was discovered in a pre-use inspection, and no accidents or injuries have occurred.

This Nexus swivel body is assembled into the:



Our initial investigation indicates that this is an isolated, one-off occurrence affecting a single unit. However, for us to complete our investigation, we are requesting that the **77 units** sold from this batch are returned to DMM for factory inspection.

The products we would like returned have serial numbers in the following range: **190790036E to 190790137E**.  
Manufactured on: **20th March 2019**



serial numbers between  
**190790036E - 190790137E**

Products with serial numbers before and after this range are not affected.

Products in non-standard colour ways e.g. matt grey are not affected.

It is important that the serial number is read from the green Nexus body and not either of the grey compact shackles.



If any are located please remove the product from service and notify customer services for us to arrange return of the product and issue a free of charge replacement.

email: [cs@dmmwales.com](mailto:cs@dmmwales.com)

direct line: +44 (0)1286 873 447

We are on hand to facilitate the return process and advise on this matter.

Thanks for your understanding and support, and apologies for any inconvenience.